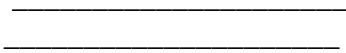
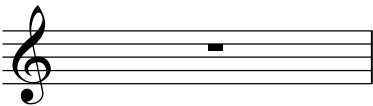


Indique les différentes tonalités majeures puis les gammes relatives mineures

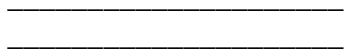
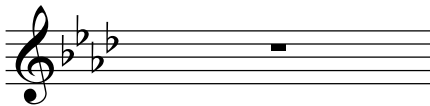
Deux gammes relatives ont la même armure. L'une est Majeure, l'autre est mineure.
Pour trouver la gamme relative mineure, il suffit de partir de la tonalité majeure et de descendre d'une tierce mineure.
Par exemple: do Maj , si on descend d'une 3^e mineure, on obtient la mineur.

Indique d'abord la tonalité Majeure puis en-dessous la tonalité relative mineure.

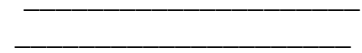
1



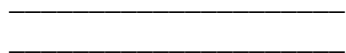
2



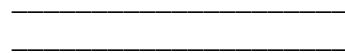
3



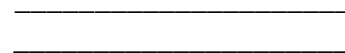
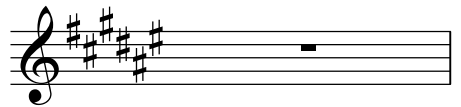
4



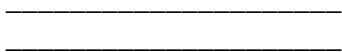
5



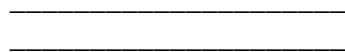
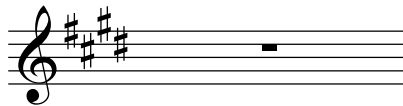
6



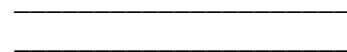
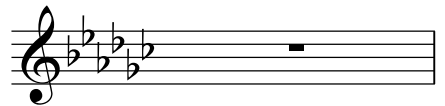
7



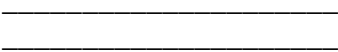
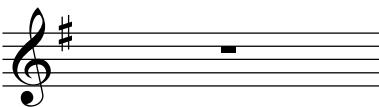
8



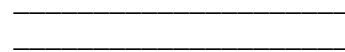
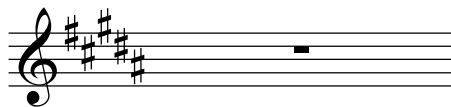
9



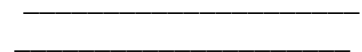
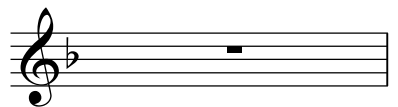
10



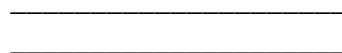
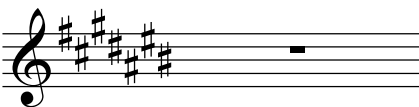
11



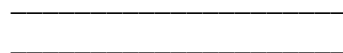
12



13



14



15

